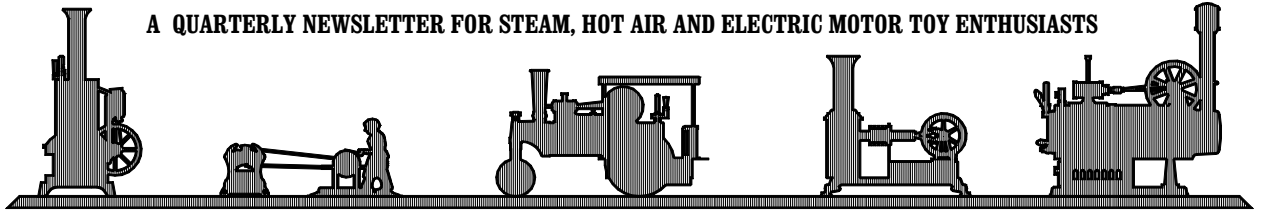


The TOY ENGINE COLLECTOR

A QUARTERLY NEWSLETTER FOR STEAM, HOT AIR AND ELECTRIC MOTOR TOY ENTHUSIASTS



Complimentary Trial Issue

January, 1995

Reissue

Page 1



Ramblings from the NORTHWEST CORNER ...

Welcome to the first complimentary issue of **The TOY ENGINE COLLECTOR!** This is a new quarterly newsletter for those individuals who collect, restore, or just want to know about those wonderful motive toys made by numerable manufacturers for more than 100 years.

In each issue, we'll try to have feature articles by one or more collectors such as Don Haskins, Richard Leach, Hal Swann, Lowell Wagner, myself, and, hopefully, *you!* And *you* are especially important because it is a newsletter for all of us--not a select few. We'll also have a "Question and Answer" column in each **TEC** issue as well as the usual classified ads and other features.

So, if you're interested in these types of toys, just mail the attached annual subscription form with a check for \$12. The first issue will be the Spring Issue (Issue No. 1) which should be in the mail by mid-April.

If you'd also fill out the information on the enclosed application form it would be most appreciated.

Thanks-

Dick Cutler

TEC TIPS, TIDBITS & TRIVIA

FIRST MEETING

Two of this issue's contributors met for the first time this past November. **Lars Peterson** of Calimesa, CA visited with **Hal Swann, Jr.** at his home in Nashville while on an extended vacation trip. Lars got to see Hal's superb collection of Weeden steam toys.

RECENT ASKING PRICES

Hammermill (two hammers & electric motor on base) made by Hess of Germany\$250. [Oct. '94 ATW]

Weeden No. 60 \$975. [Nov. '94 ATW]

Weeden No. 902 \$85. [Antique Mall]

Marklin Clockwork Steam Roller (exactly like steam model 4084) \$1900. [Dec. '94 ATW]

Jensen Model 35 \$85. [Toy Show]

Atwood (Steamcraft) S501 "Amazon Side Wheeler" Boat (2)..... \$285 and \$125. [Antique Mall]

WileSCO D8 \$85. [Antique Store]

SWANN BOOK REVIEWED

Hal Swann Jr.'s new book, "*The Weeden Mfg. Co.*," was reviewed in the December issue of *Antique Toy World* magazine. Hal has reported brisk sales. Our thanks to Hal for this effort that has rewarded us all.

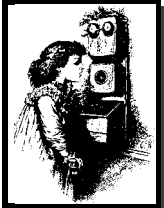
GOT SOME NEWS TO REPORT?

LET TEC KNOW!

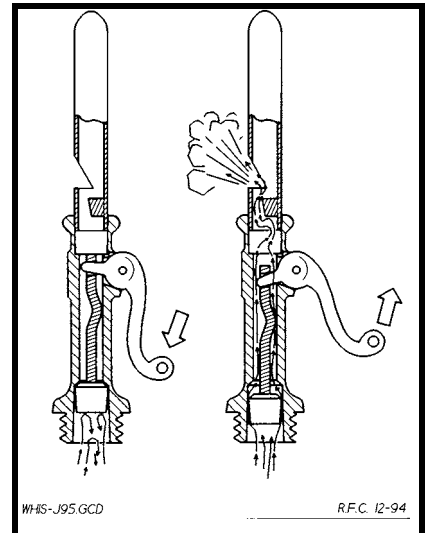
KEEP YOUR FELLOW COLLECTORS INFORMED ...

A WHISTLE

NOTE



Ever wonder what was inside one of those lever-actuated whistles that were used on older Weeden engines such as the Models 10, 32, 34, 36, and 60? Let's take a look at the drawing below.



The brass lever engages a slot in a vertical, rectangular brass rod that moves an attached lead plug valve. Under normal steam pressure, the plug is held against the whistle body (left drawing), thereby preventing steam from entering the whistle. When the lever is pulled upward (right drawing), steam enters the whistle chamber causing the whistle to sound off with a note that is considerably more "beefy" than that which the usual Weeden whistle produces.



We Welcome This

GUEST ARTICLE

THE WEEDEN-YOUTH'S COMPANION CONNECTION

By Hal R. Swann, Jr.
Nashville, Tennessee

William Nye Weeden was born in 1839 in New Bedford, Mass. He became apprenticed to James T. Almy of that town and, under Almy's tutelage, became proficient as an engraver, jeweler, and watch maker. Later, Weeden moved to Boston and opened a small watch repair shop. It was there that he met a Colonel Merritt—who was later connected with the Waterbury Watch Co.

Eventually, Mr. Weeden was employed by Waterbury and rose to become mechanical superintendent. About 1879 he returned to New Bedford to open a small shop to manufacture mechanical novelties. It's not certain when Weeden began making toy steam engines, but records show the

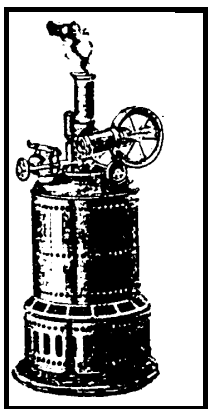


Figure 1.
Weeden Number 1

U.S. Patent Office received and filed an application for his toy motor on September 5, 1884. This motor became the Weeden No. 1. The patent, No. 318,335, was granted on May 19, 1885.

In the late 1800's and early 1900's, many magazines offered premiums for new subscriptions. The *Youth's Companion* was one, and their Mr. Upham was anxious to find a steam toy that would be superior to European models for their premium list. At Mr. Upham's request, Weeden prepared a working model which so pleased Mr. Upham that he placed an order for 10,000 engines at a price of \$1.00 each!

Advertising from that period shows that Weeden Mfg. Co. was established in 1882 and incorporated in 1887 (See Figure 2). The initial *Youth's Companion* order gave Weeden the impetus to incorporate and expand. The Weeden catalog of that period shows that pull toys were discontinued and some 24 steam toys were offered.



Figure 2. Early Weeden Advertisement

(Courtesy of New Bedford Free Public Library)

The final showing of the Weeden No. 1 engine as a *Youth's Companion* premium was in 1890. This was replaced with Weeden model No's. 3,7,8,12, "Water Witch" boat, "Dart" steam train set, and the steam force pump.

In 1889 the Weeden "Big Giant" (No. 20) was introduced. With only slight changes, this popular model was offered until *Youth's Companion* ceased publication in September of 1929. It was a popular feature premium and was given the most prominent position and the largest pictures in the weekly magazine.

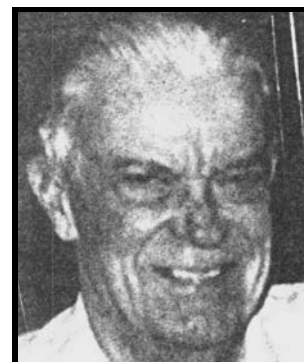
By its demise in 1929, *Youth's Companion* had offered over 30 Weeden products as premiums. Other magazines also offered steam toys as premiums for new subscriptions, including *The American Boy*, *American Agriculturist*, *Boy's Life*, *Household Supplement*, *Ladies Home Journal*, *Little Folks*, *Star Monthly*, and *McCalls*.

Ed. note- As late as 1938, the "Whizzer" steam engine (not a Weeden product) was offered free with every subscription for 24 issues of *The Open Road for Boys*. Total cost of subscription and engine (post-paid) was \$1.00!

It is this writer's opinion that the combination of the Depression and the folding of *Youth's Companion* in 1929 contributed in great part to Weeden Mfg. Company's decline and its eventual sale to National Playthings, a Division of National Pairpoint Company.

But, compared to most steam toy manufacturers, Weeden survived a long time. Approximately 150 numbered models of Weeden-made toy steam engines and electric motors have been identified, with at least as many variations.

The Author: Hal R. Swann, Jr.

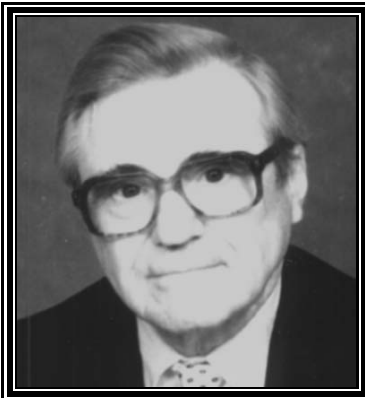




PORTRAIT OF A COLLECTOR

Lars Peterson
10320 Calimesa Blvd, No. 249
Calimesa, CA 92320

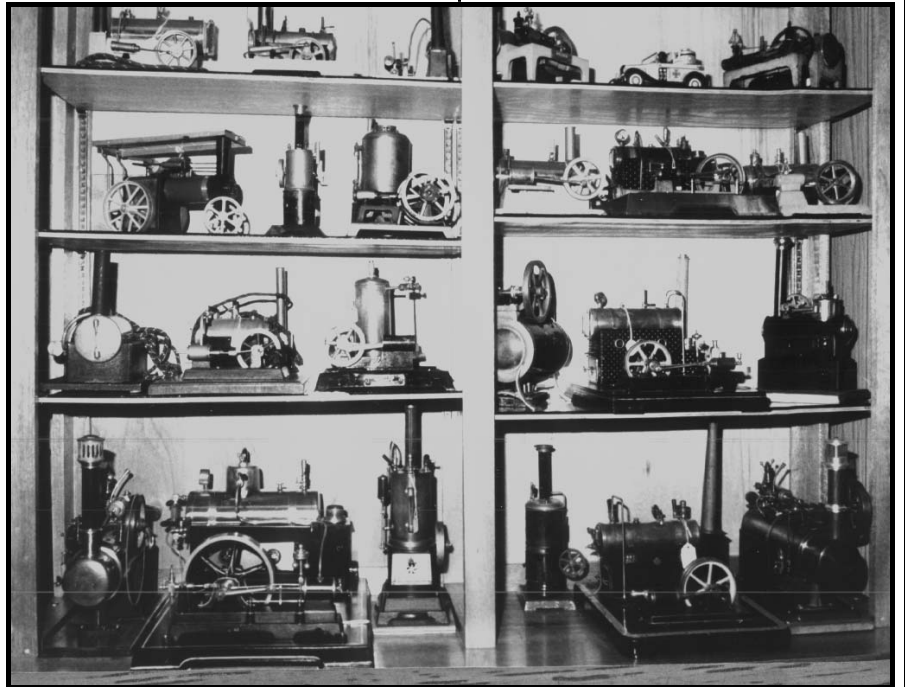
- Age 82
- Occupation Retired
- Marital Status.....
Married
- Family 3 Children
- Years Collecting20



• Collector: Lars Peterson 5

Several years prior to my retirement, I realized that there would be a void in my life that I would not like. Something was needed to fill that void.

Several ideas came to mind, but the thought of somehow becoming involved with live steam toys always seemed to be at the top of the list. There was a good reason for this; my background was in power generation and I'd been a millwright and stationary engineer for some forty years.



I was also licensed in the state of New Jersey for internal combustion, steam, and ammonia refrigeration work.

The first toy engine to be found was a small Fleischmann. When this was followed by a vertical Doll engine it became evident that I was hooked! Later, at a farm auction in Pennsylvania, I was fortunate to obtain two more engines of unknown manufacture. At that time I never realized that there would be so many manufacturers of steam toys.

As time passed (twenty years of it) my collection grew to over 60 toys and included makes such as *Bing*, *Doll & Cie*, *Marklin*, *Schoenner*, *Weeden*, *Empire*, *Fleischmann*, and others.

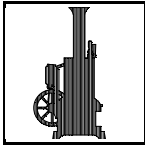
In 1954 my wife Irma and I went to Sweden for a vacation and to locate a pen-pal who lived there.

Through his efforts, I was able to locate a "John Erickson" and a "Danialson" engine. Since that trip, I've had other engines shipped over from Sweden.

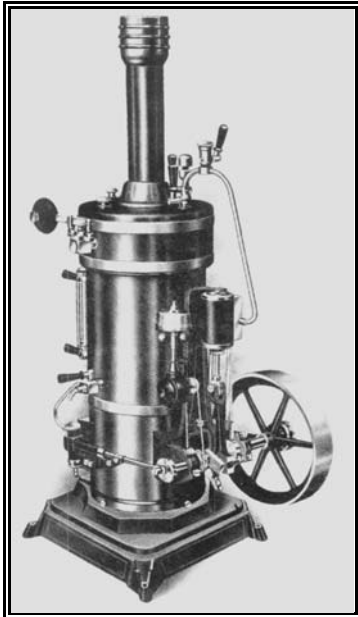
Ed. Note: The "Danialson" engine is also known as the "A.D.E." We hope to present this Swedish A.D.E. engine as one of the "Featured Engine" series in a future issue of TEC.

I've also done a little restoration work on a few of the "distressed" toys. Regrettably, with the realization that time is passing, I've begun selling my collection. The photo above shows some of the engines that still remain in my collection.

However I can, without regret, reflect on the pleasures I've had meeting and knowing some outstanding people and friends in this hobby. These include Carl Burnett (a California toy dealer), Dick Cutler, Peter Sala (another California toy collector, now deceased), and Hal Swann--just to name a few.



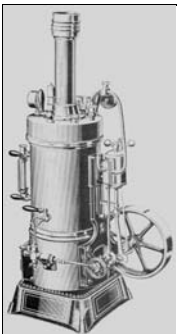
This Issue's
**FEATURED
ENGINE**



BING MODEL 130/114

This issue features one of a series of six similar German vertical steam engines that are shown in the 1912 and 1913 *Gebrüder Bing* catalogs. The six are all designated as the 130/1xx engine--the last three one hundred-series digits representing the various sizes and configurations of this model.

These particular Bing engines are remarkably similar in appearance to a group of engines made by the German toy manufacturer Doll & Cie (see inset), and which carry the catalog designation of No. 359/x.



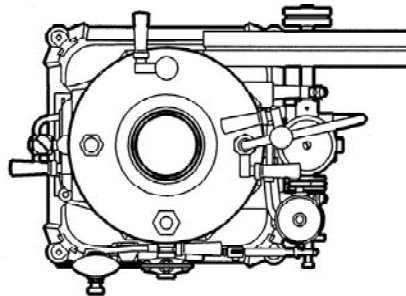
Doll No. 359/4

In this case, *x* is a single digit ranging from 1 to 6 that represents the size. Even a seasoned collector could be forgiven for mistaking a photo of this series of Bing model for one of the Doll engines--and *vice-versa*.

The 130/1xx engines are described in the Bing catalog as being "*Hochfeine*" which, after translation, means roughly "highly refined." They are certainly at the high end of the quality spectrum, having a base, engine frame, flywheel, and firebox door made of cast iron. Highly detailed and

plated brass fittings are installed, and an abundance of fine red pinstripping is used on a dark blue paint. The flywheel is painted a maroon color with yellow pinstripping. The blued brass boiler of the 130/114 has a center flue running from firebox to smokestack. The alcohol burner has two large wicks and two smaller ones.

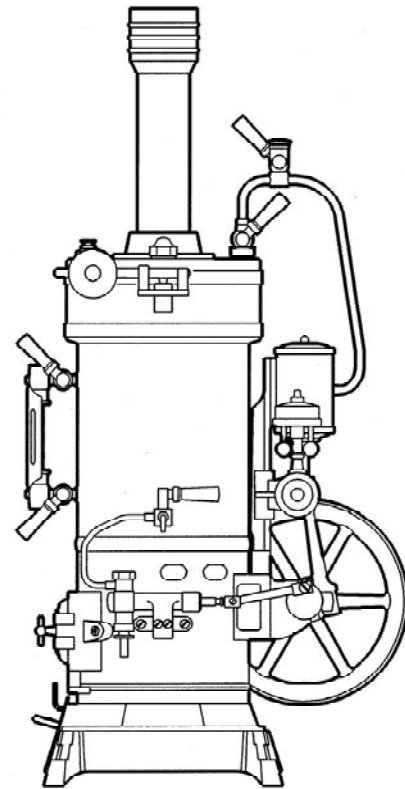
A drawing of the Bing 130/114 is shown below. A table has been included showing the dimensions from the Bing catalog (but converted from metric) of the other models of this series.



TOP VIEW



FIREBOX DOOR
DETAIL
(Scale = 2X)



SIDE VIEW

BING NUMBER	TOTAL HEIGHT INCL. STACK (in.)	BOILER DIA. (in.)	FLYWHEEL DIA. (in.)	FEED PUMP & GOVERNOR
130/111	11.81	2.44	3.15	neither
130/112	12.99	2.76	3.45	neither
130/113	14.76	3.15	3.94	both
130/114 (1)	16.34	3.54	4.33	both
130/115	118.11	3.94	4.72	both
130/116	20.67	4.53	5.32	both

(1) This engine is shown in drawing at 1/4 full size.

The TOY ENGINE COLLECTOR (TEC) is a quarterly publication in the interest of collectors of antique toy engines, toy electric motors, and related accessories. Annual U.S. subscription rate (four issues) is \$12.00. TEC is published in approximately mid-month during January, April, July and October.

All correspondence may be sent to:

The TOY ENGINE COLLECTOR
P.O. Box 157
Naples, ID 83847

Manuscripts and Photographs: Contributions are welcomed. All such material will be considered to be gratis. Manuscripts should not exceed 600 words in length. Photographs and drawings must have one dimension not exceeding 4 inches for the area of interest. TEC can scale material to any size.

Editor & Publisher: Richard F. Cutler

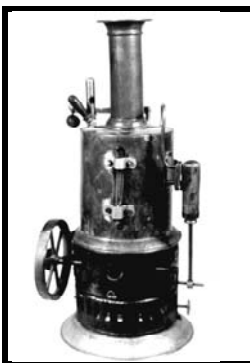


QUESTIONS ~~ & ~~ ANSWERS

Please submit answers to reader's questions directly to **The TOY ENGINE COLLECTOR**. All answers will be published at the earliest possible opportunity.

Q. Can anyone identify the engine shown in this photo? It is similar to the Weeden No. 20 and the "Big Giant" engines, but has a different type of cylinder arrangement and other minor variations. The center-flue brass boiler is $3\text{-}\frac{3}{16}$ inches in diameter. Flywheel diameter is $2\text{-}\frac{15}{16}$ inches.

Overall height is $11\frac{1}{2}$ inches. The burner base is $4\text{-}\frac{7}{8}$ inches in diameter. The stack is $3\frac{1}{4}$ inches high. An unusual feature is a sight hole in the firebox.



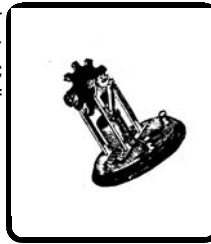
Hal Swann
Nashville, TN

Q. Can anyone provide information regarding the *Major Toy* steam engines? These were produced in Detroit and Ecorse Michigan. Need to know what period these were manufactured, information about the company, what the smokestacks looked like, and whether the similar "Red Injuri" engine was also made by this firm.

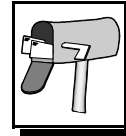
Dick Cutler Naples, ID

Continued in Next Column ...

Q. Does any reader know who manufactured this electric motor and the date of manufacture?

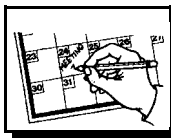


Richard Leach
Edwardsburg, MI



READER'S COMMENTS

(This space is reserved for reader's future comments. We particularly welcome all constructive comments regarding TEC content as well as corrections or additional information related to the articles published in it.)



UPCOMING EVENTS

APRIL 21, 1995: - Steam Toy Enthusiast Get-Together. To be held from 7 PM to 9:30 PM at the Holiday Inn, 20777 Eureka Ave, Taylor, MI 48180. For reservations call: (313)-283-2200 or 1-800-465-4329.

Bring your toys to sell or trade. A \$5.00 donation is requested from each family to cover the cost of a meeting room, display tables, refreshments, etc. In 1994, this successful event attracted over 60 collectors and enthusiasts.

For further information, call **Richard Leach:** (616)-663-8197 (evenings).

"ON PRODUCING CATALOGS"

by **Richard Leach**
Edwardsburg, MI



Having collected Weeden steam engines for several years, I noticed a scarcity of original written and illustrated historical material. I began to collect material in bits and pieces--most being poor photo copies.

Since then, with the help and encouragement of fellow enthusiasts, we have restored several more catalogs. Some of you are familiar with our first reproduction catalog, the 1937 *Toy Steam Engines & Accessories*. Several bottles of whiteout were consumed and many late nights were spent producing *that* particular catalog.

After our first issue came out, we began to get questions from hobbyists about model numbers of certain steam engines and electric motors. *The Pictorial Guide to Weeden Steam Toys* was put together to answer those questions and to satisfy the needs of collectors and hobbyists.

We spent over two years gathering information and illustrations from original Weeden advertising for that booklet. It contains all of the illustrations for Weeden steam toys, electric motors, and related items.

We are always seeking new material and historical information that would be of value to the hobby. As material becomes available to us, we will keep old material updated through revision sheets and new additions.

We have just finished our first partial color reproduction. This is a 1935 Weeden catalog with four color center pages. We also have several full-page Weeden ads in color (suitable for framing). We're currently working on a pictorial guide to toy electric motors that covers American made toy motors from the late 1800's through the 1950's.

Putting these together has truly been a labor of love for a hobby we hope to pass on to future generations. We hope you enjoy them and find them of value to you--the toy engine and toy motor enthusiast.

The TEC (approximate) TRANSLATOR GERMAN-ENGLISH

Abdampf exhaust or waste steam
Blechfuß/Blechfuß sheet metal base
Doppletwirkend double acting
Feuerung firebox, furnace, firing
Gussfuß/Gussfuß cast base
Heissluftmotor hot air engine
Kessel boiler
Läuferwelle armature/rotor shaft
Oeler/Öler oil cup, oiler, lubricator
Rückwärtsgang reverse motion/gear
Schwungrad flywheel
vernickeln nickel plated
Wasserstandsglas water level glass

CLASSIFIED ADVERTISING**FREE ADVERTISING:** *Subscribers to TEC may place one free ad in each issue. However, the following rules must be observed:*

1. Subject matter must relate to toy steam, thermal, and electric engines, their catalogs & accessories. No non-toy items or model engines please.
2. Ads must be submitted in writing for *each* issue--as you wish it to appear--*even if the same material is unchanged* from the previous issue.
3. Free ads must not exceed 15 words plus name, address and one phone number. Additional words are at the regular rate for non-subscribers.

GENERAL ADVERTISING: *The following rates apply to non-subscribers and to commercial and "box-type" ads (for each issue). Non-subscribers may place ads at 10 cents per word. Each--full name/street address/city/state+ZIP/phone number/FAX number/--is one word. Prepared "box-type" ads are \$2.50 per column inch for one column width or \$5.00 per column inch for two column widths--calculated to the next largest 1/4 inch. Artwork can be prepared from submitted sketches for a small additional charge, depending on complexity (please contact TEC). Currently, material submitted must not exceed 4 inches in one dimension but can be rescaled by TEC (after being scanned) to any size required.*

ADVERTISING SUBMITTAL: *Submit ads to: The TOY ENGINE COLLECTOR P.O. Box 157 Naples, ID 83847***Deadline for submittals is the 15th of the month prior to that in which TEC is published (Published in January, April, July and October).**

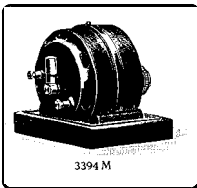
Though every effort will be made to publish all ads submitted, the editor reserves the right to reject inappropriate material and to revise submittals.

WANTED TO BUY

Collector and restorer of toy steam, hot air, other miniature engines wants quality old items that can be purchased at a reasonable price and which are lower in cost than market value due to their condition. The goal is to provide the restoration, increase the present value, and to store the items for future appreciation and sale.

Don Haskins
1237 Alleghany Lane
Northbrook, IL 60062
(708) 498-3516

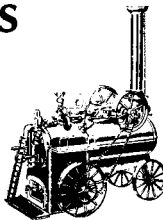
Need Model 3394/1 generator (any condition) for Marklin Type 4112/14/94 steam plant. Want either round frame (see drawing) or earlier square-frame version. Generates 3 1/2 volts at 1.8 amps. Approx. 5.5 in long, 3 1/2 in wide, and 4 3/8 in high with wood base.



Dick Cutler
P.O. Box 157
Naples, ID 83847

STEAM TOYS WANTED

ALSO
Hot Air Engines
ALSO
Catalogs on
Steam & Hot Air
One or Collection



LOWELL J. WAGNER
10585 KNIGHT, WACONIA, MN 55387
H: 612-442-4036 O: 612-544-4543

WANTED!

- TOY POWER PLANTS
- STATIONARY STEAM ENGINES
- STEAM TOYS
- OLD MODEL LITERATURE

TOY ELECTRIC MOTORS

WANTED- Information and Illustrations for all TOY ELECTRIC MOTORS used from the earliest times to date. Information to be used in *Pictorial Guide to Toy Electric Motors*.



Richard Leach
26146 Redfield Road
Edwardsburg, MI 49112

Looking for something? Your free 15 word advertisement could be here when you subscribe to The TOY ENGINE COLLECTOR!

Your Name, Address, Phone Number

Fifteen words not enough? Remember that additional words are only 10 cents per word. This could be *your* want ad! So, mail your subscription form right away to The TOY ENGINE COLLECTOR!

Your Name, Address, Phone Number

Your 15-word free want ad can appear every issue when you subscribe to The TOY ENGINE COLLECTOR!

Your Name, Address, Phone Number

Remember! You must submit your free advertisement material for each issue--even if it has not changed from the previous issue. Please see page 6 for all of the free classified advertising rules.

WANT A "BOX-TYPE" AD?

This 1-inch by one column ad costs only \$2.50 per issue!

FOR SALE

Fifty steam toys and electric motors in excellent condition. Bing, Doll, Empire, Falk, Fleischmann, Knapp, Marx, Misco, Weeden and Wileco. Deluxe reprints of catalogs, instruction sheets, and related items. Send \$2.00 for complete listing.

Richard Leach
26146 Redfield Road
Edwardsburg, MI 49112

THE WEEDEN MANUFACTURING Co.

Its men and their toys

- A history of the company
- Patents - dates offered
- Over 125 engines pictured
- Rarity rating of models
- More than 300 line drawings of engine parts
- Other engines by Weeden

Post paid U.S.A \$35.00
Hal R. Swann, Jr.
915 Overton Lea Rd.
Nashville, TN 37220-1502

Got something to sell? Your free 15 word advertisement could be here when you subscribe to The TOY ENGINE COLLECTOR!

Your Name, Address, Phone Number

ERRATA: Some copies of this issue were printed with the word "complementary" in the "NORTHWEST CORNER" column (1st para.). Should be "complimen-

CLASSIFIED ADVERTISING (CONTINUED)

FOR SALE

Something to sell? Your own free 15-word advertisement could be here when you subscribe to The TOY ENGINE COLLECTOR! And, only 10 cents for each additional word.
Your Name, Address, Phone Number

LONG-TIME COLLECTOR IS SELLING REMAINING TOY STEAM ENGINES TO CLOSE OUT COLLECTION. ABOUT 30 ENGINES, INCLUDING BING, DOLL, MARKLIN, SCHOENNER, WEEDEN, EMPIRE, AND FLEISCHMANN. ALSO SELLING RARE SWEDISH "JOHN ERICSSON" AS SEEN IN HARLEY'S "TOYSHOP STEAM" BOOK.

LARS PETERSON
10320 CALIMESA BLVD.
SPACE 249
CALIMESA, CA 92320
(909)-795-4481

WEEDEN

- Classic Reprints
- Steam Toys
- Hot Air Engines
- Toy Electric Motors



Richard Leach
26146 Redfield Road
Edwardsburg, MI 49112

BUY - SELL - TRADE
Evenings
(616) 663-8197



Want a Larger Ad?

This 2- inch by one-column size costs only \$5.00 per issue with your prepared artwork! Or, TEC can prepare the artwork for a small charge.

Please See Page 6 for Details.

"WHEN CHRISTMAS DREAMS REALLY DO COME TRUE"

By Don Haskins
Northbrook, IL



To find steam toys I often trade information with my friend Bill, who is a toy train collector and a part-time toy dealer. Bill called last December and had just bought a train from a man in Chicago who said he also had a toy steam engine for sale. Seems he wanted the money to buy Christmas gifts.

The engine turned out to be a large Doll & Cie vertical, with wooden box, three accessories, and instruction sheet--and all in great condition. I made an exploratory offer of \$100, but explained to the seller that this was a very low offer for that quality and type of engine.

He could not believe anyone would offer that much and was happy to sell it for that amount. I guess we both got our Christmas wish!

SUBSCRIPTION FORM

Ja95

REMEMBER! TO RECEIVE ISSUE NUMBER 1 OF TEC, YOU MUST RESPOND BY MARCH 15!

Cut out & mail in envelope to: **The TOY ENGINE COLLECTOR** P.O. Box 157 Naples, ID 83847
Annual (4 Issues) Subscription Rates: \$12.00 in U.S.; \$18.00 (U.S. funds) for foreign subscriptions.
Please enclose check or money order. Payment must be received by 15th of month preceding month of publication to receive the next issue. (TEC is published during January, April, July and October).

Name _____ Phone Number _____
Street/POB _____ City _____ State _____ ZIP _____ Country _____

If you'd take a minute to fill out the following information, it would be appreciated. This will help us make TEC better serve your interests.

Are you a toy dealer? Yes No

What are your toy interests? Steam-Powered Toys Hot-Air/Vacuum Toys Electric Motors Accessories for These Toys

How would you rate the size of your collection for each toy type? { None Small (fewer than 20) Medium (20 to 100) Large (Over 100)

Do you undertake major restorations? Yes No
Do you have restorations done for you? Yes No
How many years have you been collecting these toys? _____
Your age? Under 25 25-39 40-54 55-70 Over 70

Check all that apply: Employed?
 Retired? Self Employed?
 Homemaker? Student/Other?

Comments or Questions? _____
(You may use the back of this form for additional comments, questions, personal information, etc.)

CLASSIFIED AD FORM

Ja95

Cut out & mail in envelope to: **The TOY ENGINE COLLECTOR** P.O. Box 157 Naples, ID 83847
Please enclose check or MO. Enter your name as it will appear in ad. Please refer to page 6 for instructions.

1	2	3	4
5	6	7	8
9	10	11	12
13	14	15	16
17	18	19	(1)
(2)	(3)	(4)	

Free to here for Subscribers

CONTINUED ON BACK PAGE

Name _____ Phone Number _____
Street/POB _____ City _____ State _____ ZIP _____ Country _____